

One-step fluorescence quantitative comprehensive solution

—Maternal and Child Health

Diagnosis Expert

Pro-med
technology 普迈德

CONTENTS

01

Company overview

02

Platform
introduction

03

Clinical application

04

Advantages

05

More equipment

01
PART

Company Overview

About us

1. Pro-med established in 2013 which has two production, R&D bases in Beijing's Zhongguancun Science and Technology Park and Jiangsu China Medical City, 30 independent intellectual property rights, and 80 conventional product lines.
2. More than 10,000 m2 production area, 300 employees, the daily production capacity exceeds 3 million.
3. self-produced core IVD raw materials.
4. Pro-med have obtained CE certificates and China whitelists. It is expected to obtain the self-test of BfArm of Germany at the end of April.
5. The self-test list of France, Netherlands, Denmark, Austria and other countries are in application.



**More than 80 product
registration certificates**



**8000 square meters of production research and
development site, 1000 square meters of GMP workshop**

7 Technology Platforms

◆ 免疫胶体金平台

Immune Colloidal Gold Platform

◆ 免疫荧光平台

fluorescence immunoassay Platform

◆ 出/凝血诊断平台

Diagnostic platform for
bleeding/coagulation

◆ 化学发光平台

Chemiluminescence Platform

◆ 分子诊断平台

Molecular Diagnostics Platform

◆ 仪器平台

Instrument Platform

◆ 生物原材料平台

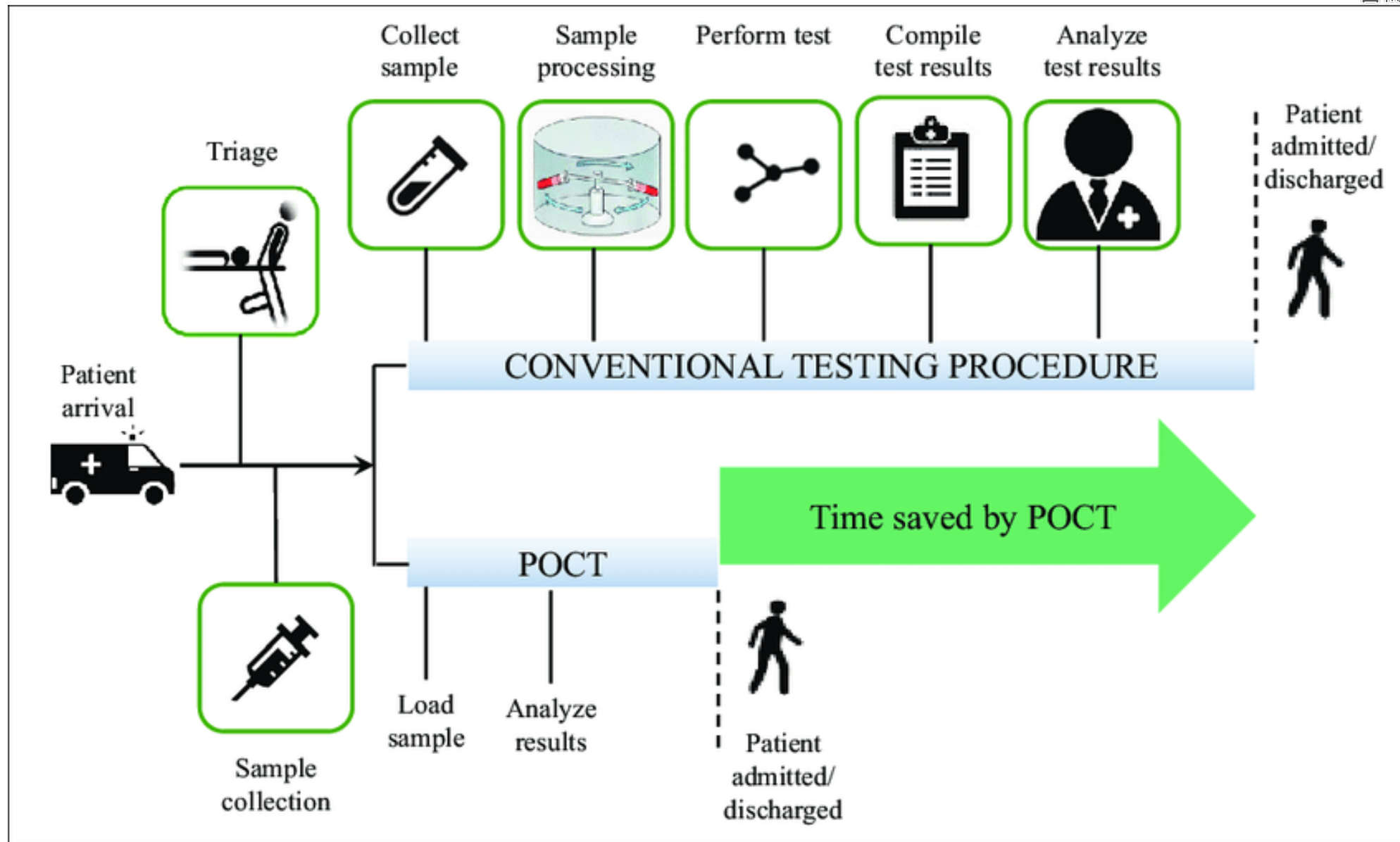
Biological Raw Material Platform



02
PART

PROJECT PROFILE

POCT advantages



Highly demand

In a small space, in order to meet different inspection items, it is equipped with multiple machines and many operations.。



PMDT fluorescence immunoassay Analyzer

PMDT9000



**PMDT9100-
multichannel**



**PMDT9800—
auto control**



High quality

High quality scanner,
colour screen, All in one
printer



High efficiency

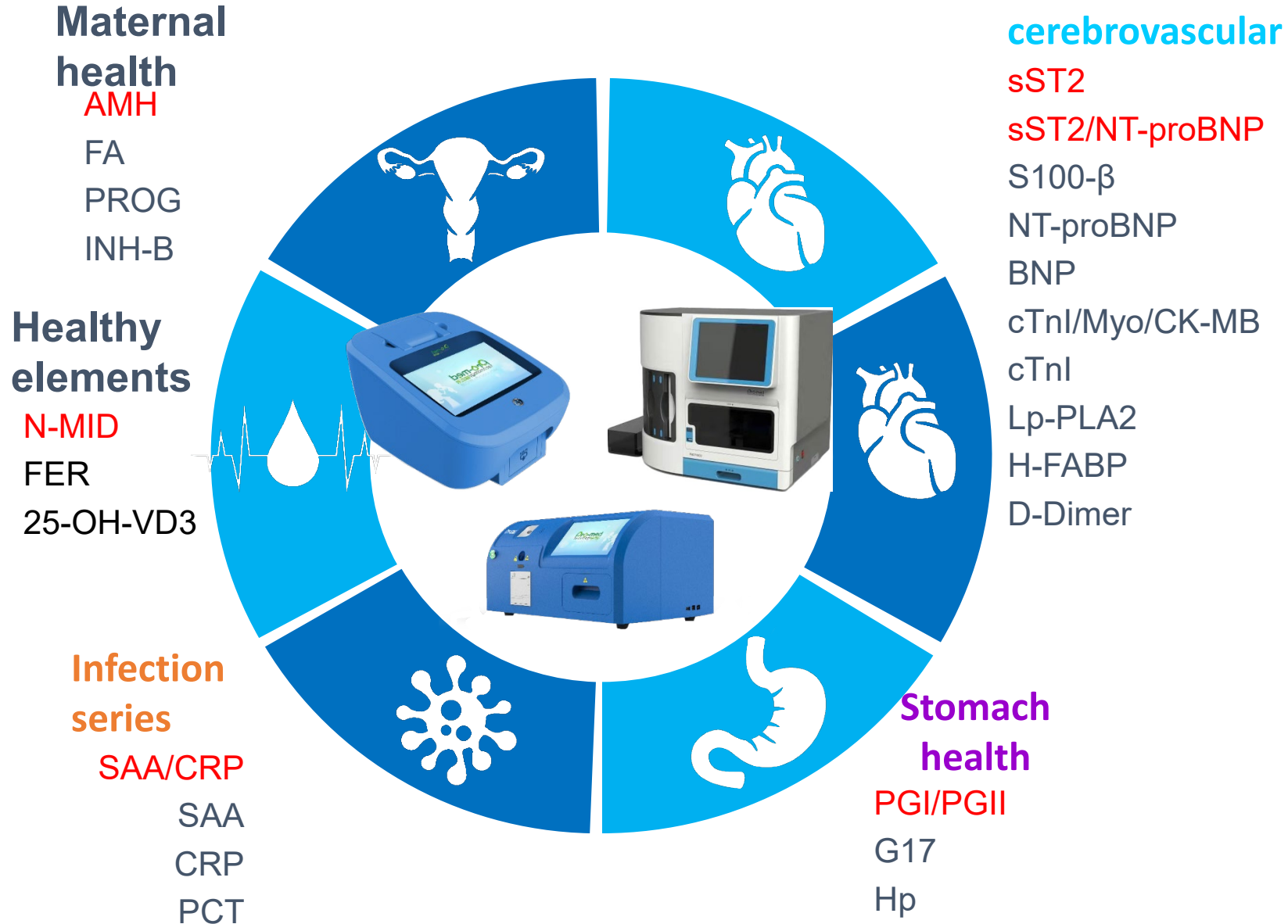
Work together at the
same time with 12
channel



High intelligence

Auto insert card, auto
scan

Featured Project Conventional Series Full coverage on one platform



PMDT Colloidal Gold Analyzer



FER
VD

Health
resources

PGI/II
PGI
PGII
HP

stomach
health

β -HCG
LH
FSH

Gonad
hormone

Relevant detection: maternal health core service

PMDT8100
Multi-
channel



Infection
series

SAA/CRP
SAA
CRP
PCT

Cardio
cerebrovasc
ular

NT-proBNP
cTnI/MYO/CK-MB
cTnI
D-Dimer

Stomach
health

NGAL
CysC
MAU
 β -MG

- 8000 & 8100 single platform can cover the detection of more than 20 kinds of markers, such as clinical common inflammation and infection, stomach health, cardiovascular and cerebrovascular, bone health, iron deficiency anemia, pregnancy detection, renal function detection, etc.

PMDT9000



Simple

- Single platform integrates nearly 30 kinds of projects, one machine has multiple functions. The operation steps are simple, and the degree of automation is high Independent identification of the project, automatic detection Support printer, thermal paper, LIS system to produce results in a variety of ways

Fast

- The detection results were obtained in 5-15 minutes to meet the needs of emergency department 120 tests / h, suitable for general medical institutions 5-10 seconds after putting in the test card

Accuracy

- German advanced spectrum scanning technology is adopted Multiple detection substances can be traced to the international first-class standards

PMDT 9100 multichannel and 9800 auto control



High throughput

- Twelve-channel continuous work, simultaneous detection of different items
- Collect all more than 20 kinds of items, independently identify the items to be tested

Fast and accurate

- The machine will time automatically, and it will be detected immediately after the project response is completed
- 120 tests/h, which can meet the testing needs of a large number of samples
- Germany imported spectral scanning technology

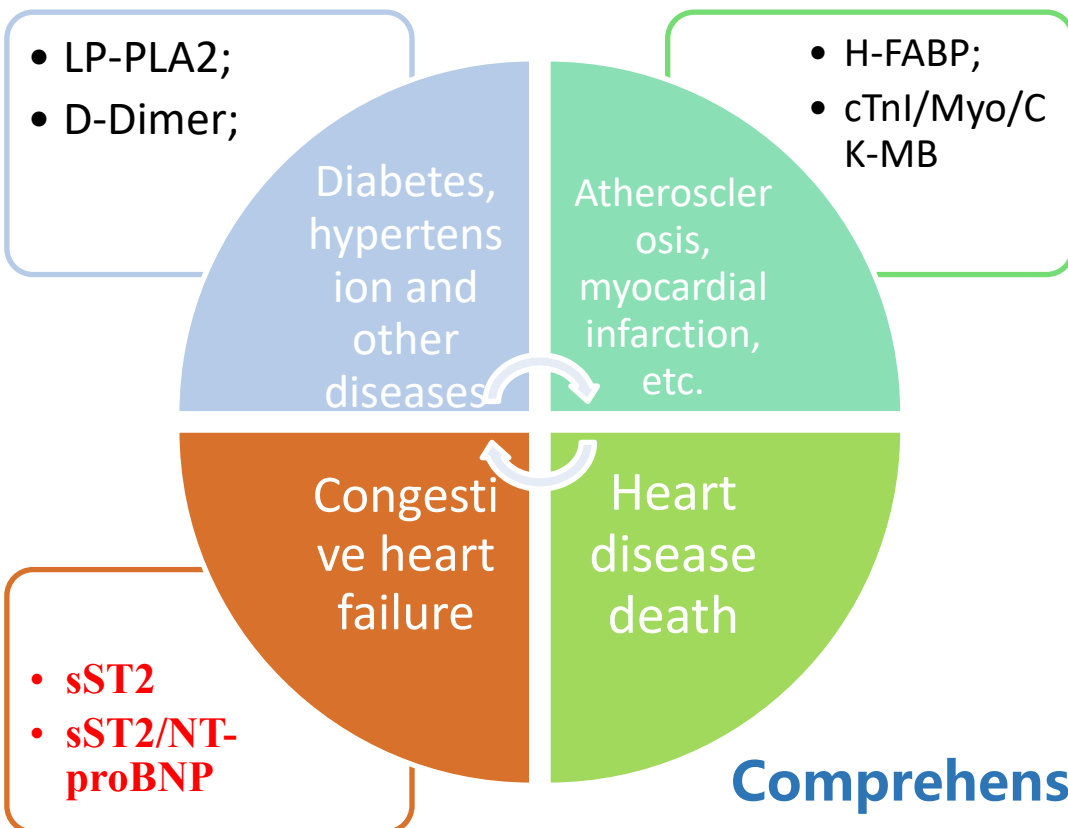
Human-computer interaction

- Variety of packages, flexible combination
- AI intelligence, integrated inspection system
- The inspection is fully automatic, and the operation burden is reduced

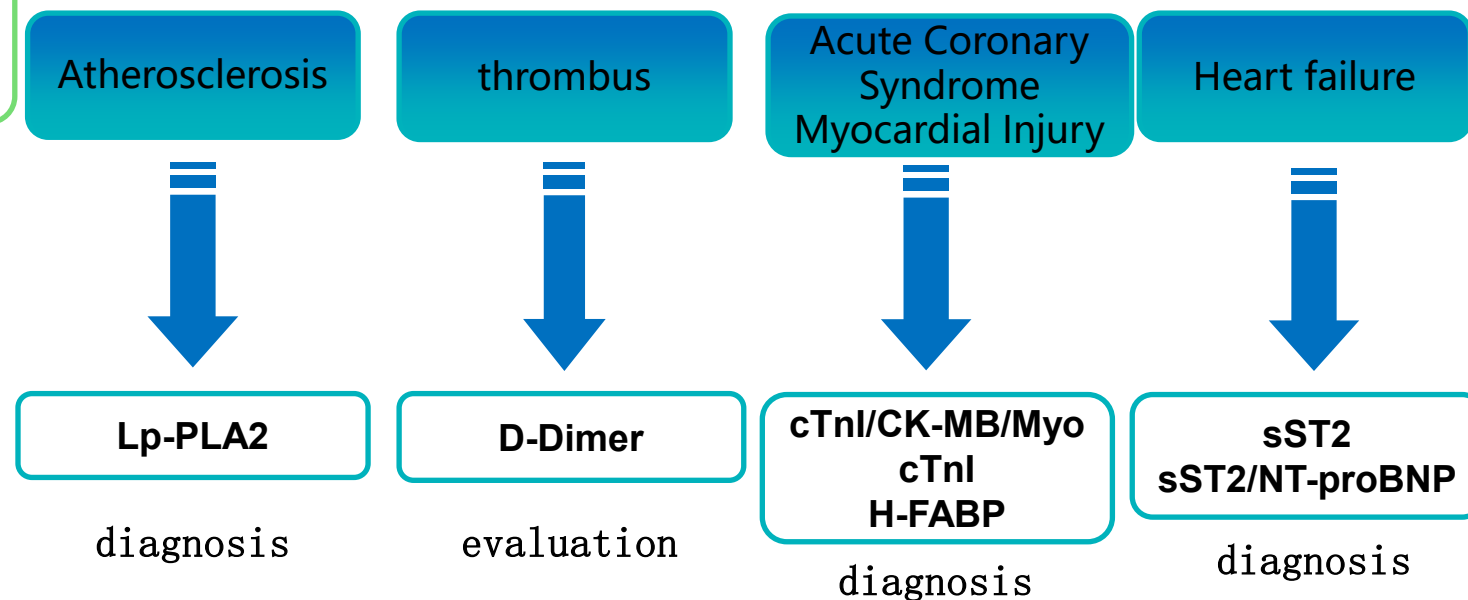
03
PART

Clinical application

The most comprehensive cardiovascular marker



Cardiology, Respiratory, Emergency, ICU,
Chest Pain Center, etc.



Comprehensive and timely monitoring of thrombus,
myocardial damage, and heart failure

The most comprehensive heart failure
package

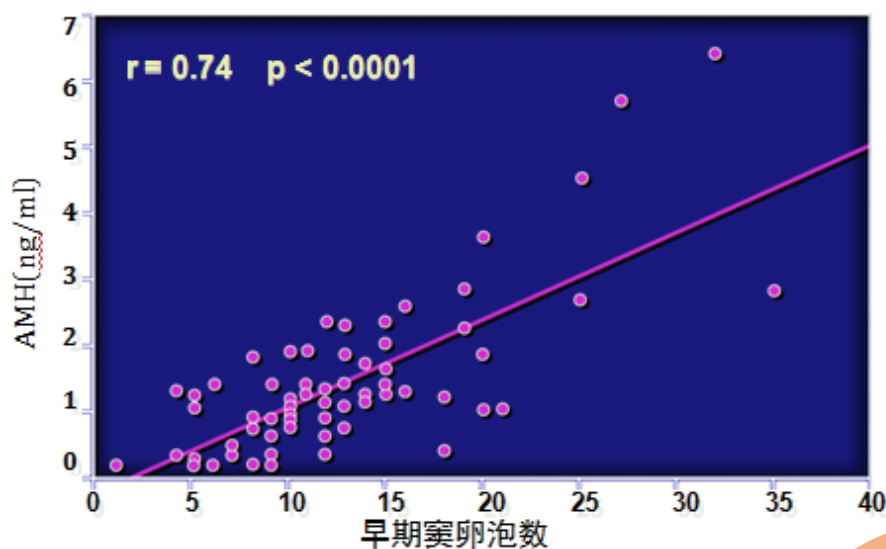
New Heart Standard 5 items tests

sST2/NT-proBNP+cTnI/CK-MB/Myo

sST2/NT-proBNP+sST2+NT-proBNP+BNP

Physical examination center, gynecology, reproductive center, endocrinology, etc.

AMH与正常女性卵泡数的相关性



Normal young women's AMH index is between 2-5

Ovarian function

Follicle

AMH

PROG

FA

Newborn

Pregnant woman

Neural tube malformation

Congenital heart disease

Down syndrome

Cleft lip and palate deformity

Megaloblastic anemia

Hypertension during pregnancy

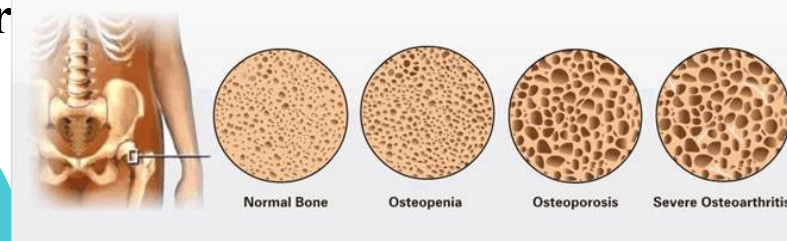
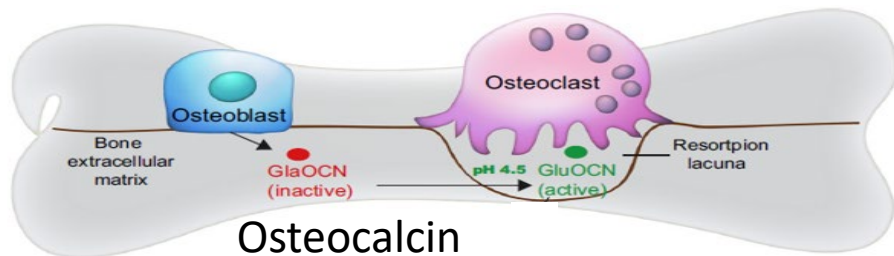
Normal young women's AMH index is between 2-5

Health elements

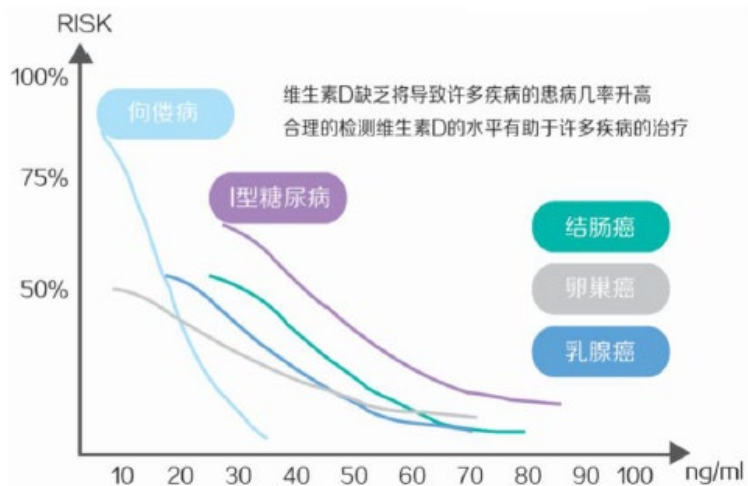
Physical examination center, pediatrics,
gynecology, geriatric

Pro-med
ology 普迈德

• 德为妇幼

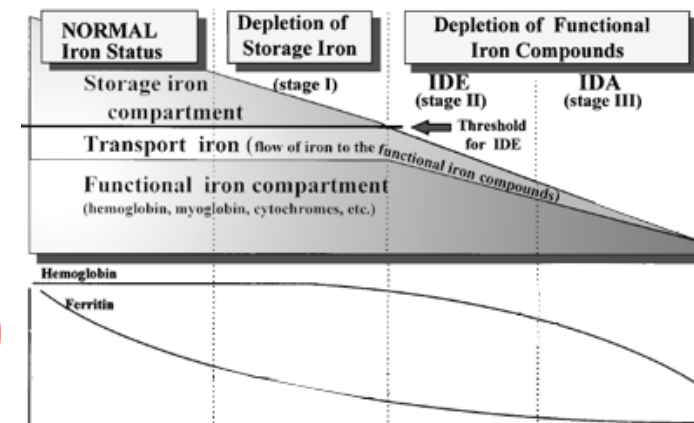


N-MID



VD

FER



Ferritin detection

> 20ng/mL, normal

< 20ng/mL, low

	FER	Hemoglobin	explain
normal	normal	normal	normal
Recessive iron deficiency period (ID)	low	normal	Depletion of iron reserves in the body
Iron deficiency anemia (IDA)	low	low	IDA iron deficiency anemia
IDA recovery period	normal	low	1. IDA recovery period: iron reserves increase first, but hemoglobin has not returned to normal due to the influence of the red blood cell life cycle. 2. Anemia combined with infection. 3. Other causes of anemia (deficiency of vitamin B6, riboflavin, and vitamin A)

➤ judge

< 10 ng/mL (25 nmol/L)

10-30 ng/mL (25-75 nmol/L)

30-80 ng/mL (75-200 nmol/L)

Lack
Insufficient
Adequate

PG I/PG II

1 Four items of gastric function

PGI + PGII + PGR + HP

2

PGI/II



Best Marker of
Gastric Function

National Standards for
Preliminary Screening of
Gastric Cancer

screening

Superficial gastritis
Erosive gastritis
Stomach ulcer
Duodenal ulcer
Atrophic gastritis
Preliminary Screening
Index for Gastric Cancer

**PG I/II+
HP**

clinical

Hp treatment effect evaluation
Ulcer initiation, recurrence and
healing
Recurrence after gastric cancer
resection
Efficacy monitoring of atrophic
gastritis

$$\text{SAA} + \text{CRP} = \text{SAA/CRP}$$

01



One card two
result

Same machine

PMDT8000/PMDT810

02



03



Consistent inspection conditions

All use whole blood/serum/plasma samples

All use our custom sampler

A

Differentiate local bacterial and viral infections

Detect SAA and CRP to make up for the disadvantage of no significant change in CRP level during virus infection

B

Early diagnosis of infectious diseases

Emergency doctors can use the joint inspection to determine whether it is a virus or a bacterial infection in time to avoid misdiagnosis and unreasonable medication

C

Effectively evaluate the severity of virus infection

SAA combined with CRP can realize the sensitivity, specificity, and positive predictive value of patient-related infections in emergency or outpatient departments

D

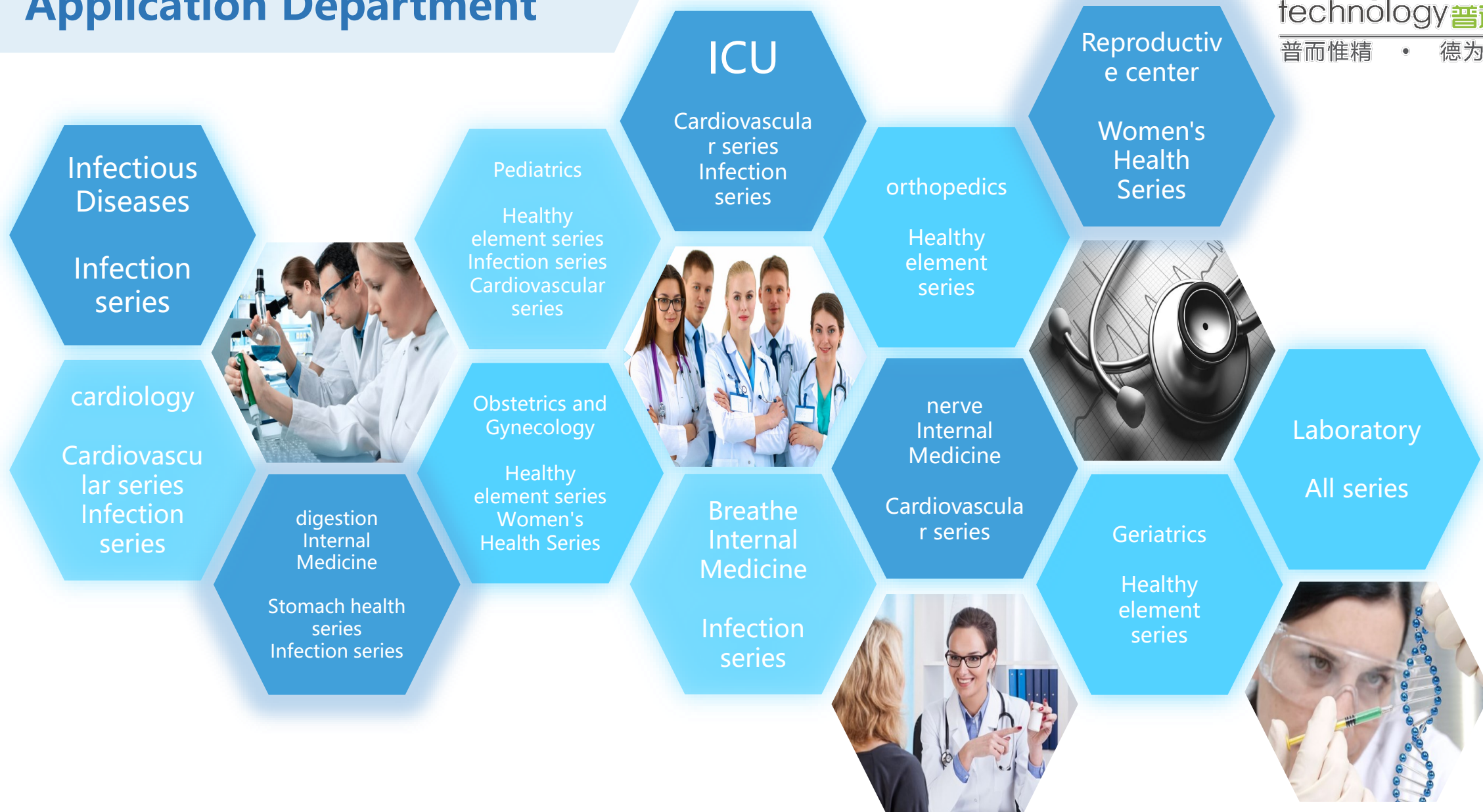
Instruct the rational use of antibiotics

By judging the data of related parameters, the degree of prognosis recovery can be quickly analyzed to guide doctors in medication

04
PART

Advantages

Application Department



Fluoroimmunoassay detection platform (PMDT 9100 & PMDT 9000)

Series	Product Name	Abbreviation	Simplified Clinical Significance
Maternal and Children	25-hydroxy vitamin D	25-OH-VD	Health evaluation of bone, immune and endocrine
	Ferritin	FER	Risk evaluation of iron deficiency anemia
	N-MID Osteocalcin	N-MID	Risk evaluation and classification of osteoporosis
	Anti-Müllerian Hormone	AMH	Health evaluation and reaction capability of ovary
	Folic Acid	FA	Risk evaluation of fetal malformation
	Progesterone	PROG	Precaution of abnormal gestation
Infection & Inflammation	Human chorionic gonadotropin	β-HCG	Check of pregnancy
	Human serum amyloid A protein/C-Reactive Protein	SAA/CRP	Simple classification of bacteria and virus infection
	Human Serum Amyloid A protein	SAA	Evaluation of inflammation
	C-Reactive Protein	CRP	Evaluation of inflammation
	Procalcitonin	PCT	Auxiliary diagnose of severe infection or sepsis
	Mycoplasma pneumoniae IgM/G	/	Simple classification of pneumonia pathogen
Cardiac & Cerebral Vascular	Chlamydia pneumoniae IgM/G	/	Simple classification of pneumonia pathogen
	Interleukin-6	IL-6	Quickly determine inflammatory infections
	Soluble growth stimulation expressed gene 2/N-terminal pro-B-type natriuretic peptide	sST2/NT-proBNP	Detailed management of heart failure
	Soluble growth stimulation expressed gene 2	sST2	severity and influence Evaluation of heart failure
	N-terminal pro-B-type natriuretic peptide	NT-proBNP	Auxiliary diagnose of heart failure
	B-type natriuretic peptic	BNP	Auxiliary diagnose of heart failure
	Cardiac troponin I/Creatine Kinase-MB/Myoglobin	cTnI/CK-MB/Myo	Auxiliary diagnose of acute myocardial infarction (AMI)
	Cardiac troponin I	cTnI	Auxiliary diagnose of acute myocardial infarction (AMI)
	D-Dimer	D-Dimer	Auxiliary diagnose of thrombotic disease
	S100-β protein	S100-β	Auxiliary diagnose of cerebral injury
Gastric Health	Lipoprotein-associated phospholipase A2	Lp-PLA2	Precaution of atherosclerosis
	Heart-type fatty acid binding protein	H-FABP	Early auxiliary diagnose of acute myocardial infarction (AMI)
	Pepsinogen I and pepsinogen II	PG I/PG II	Precaution and risk evaluation of severe gastric disease
	Gastrin 17	G17	Precaution and risk evaluation of severe gastric disease



05
PART

More equipment

PMDT Colloidal Gold Analyzer



FER
VD

Health
resources

PGI/II
PGI
PGII
HP

stomach
health

β -HCG
LH
FSH

Gonad
hormone

Relevant detection: maternal health core service

PMDT8100
Multi-
channel



Infection
series

SAA/CRP
SAA
CRP
PCT

Cardio
cerebrovasc
ular

NT-proBNP
cTnI/MYO/CK-MB
cTnI
D-Dimer

Stomach
health

NGAL
CysC
MAU
 β -MG

- 8000 & 8100 single platform can cover the detection of more than 20 kinds of markers, such as clinical common inflammation and infection, stomach health, cardiovascular and cerebrovascular, bone health, iron deficiency anemia, pregnancy detection, renal function detection, etc.

Thanks for listening